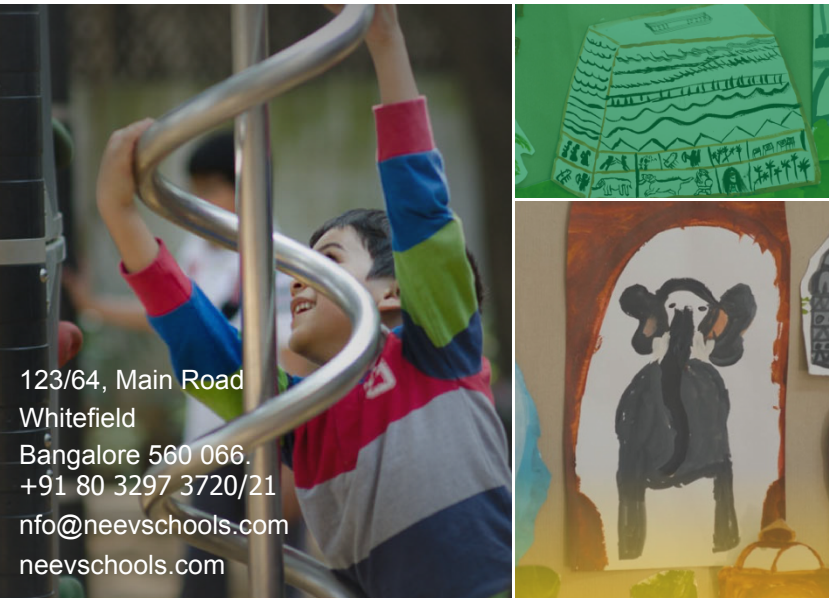




Building foundations for life



Authentic school environments

Feb 23, 2018

123/64, Main Road
Whitefield
Bangalore 560 066.
+91 80 3297 3720/21
nfo@neevschools.com
neevschools.com

Any Guesses?



Ingvar Kamprad





नीलकण्ठ

कालिदास

पद्मनाभ

The Wish

nature air

quiet

light

calm

Relationship

community

The reality

NOISE

SMELLS

CROWDS

CONFLICT SPRAWL

TRAFFIC

HONK

POLLUTION

NEON

SEWAGE

yuck ☹️

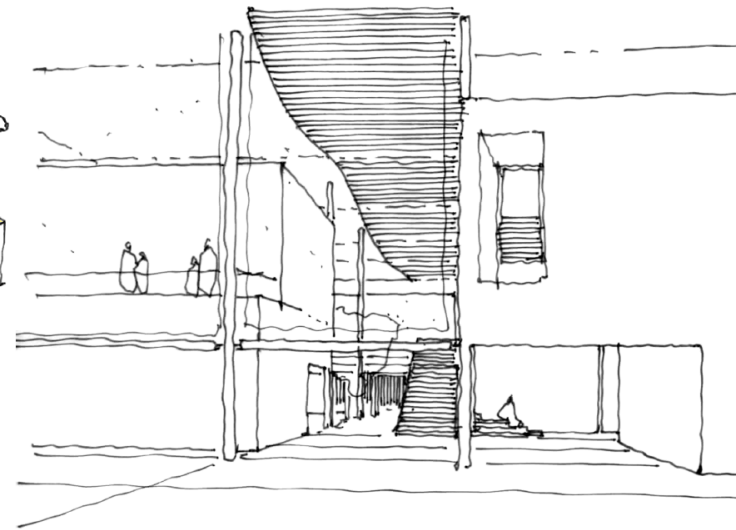
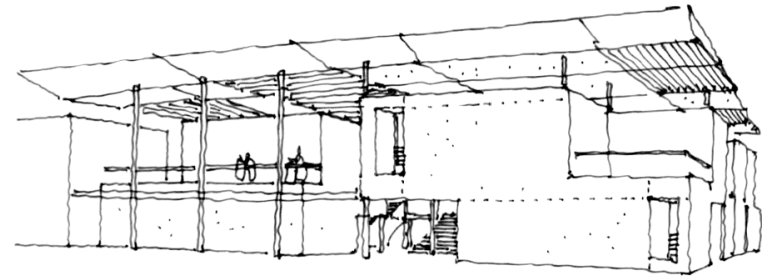
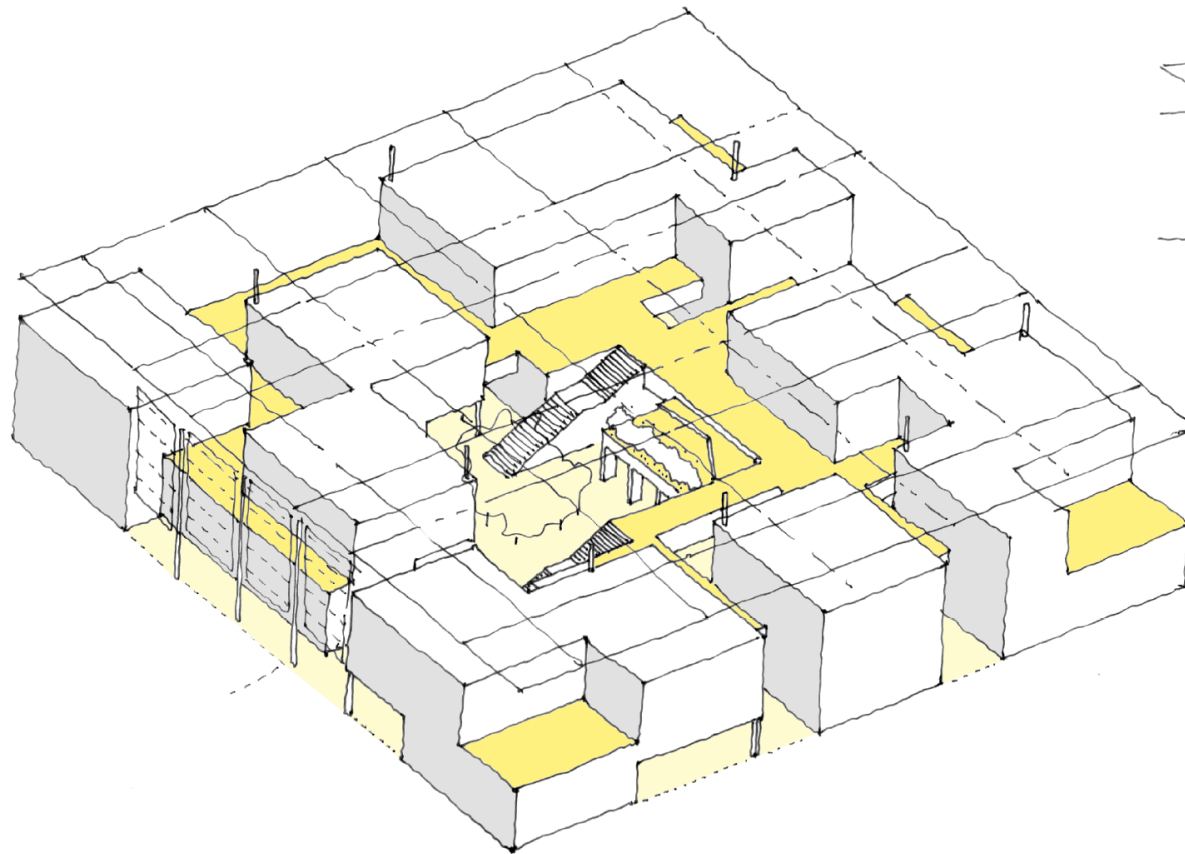
What do we do?

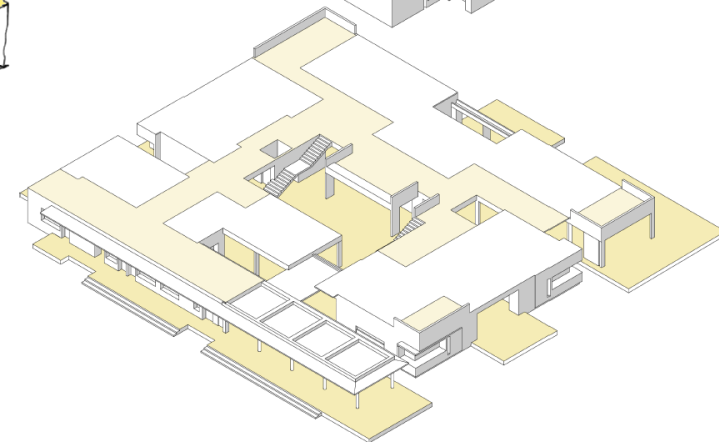
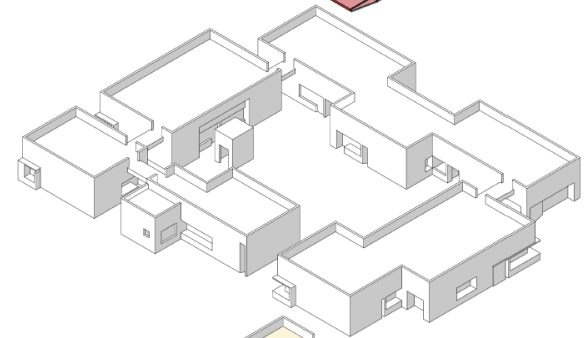
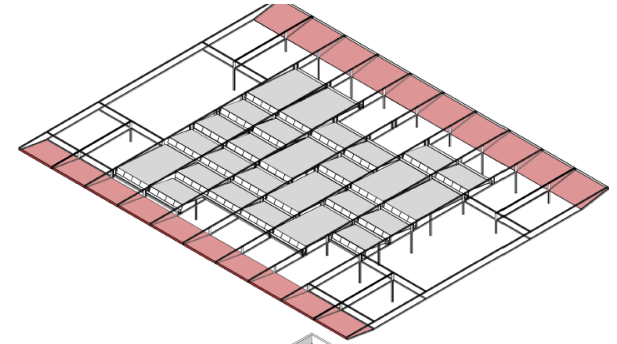
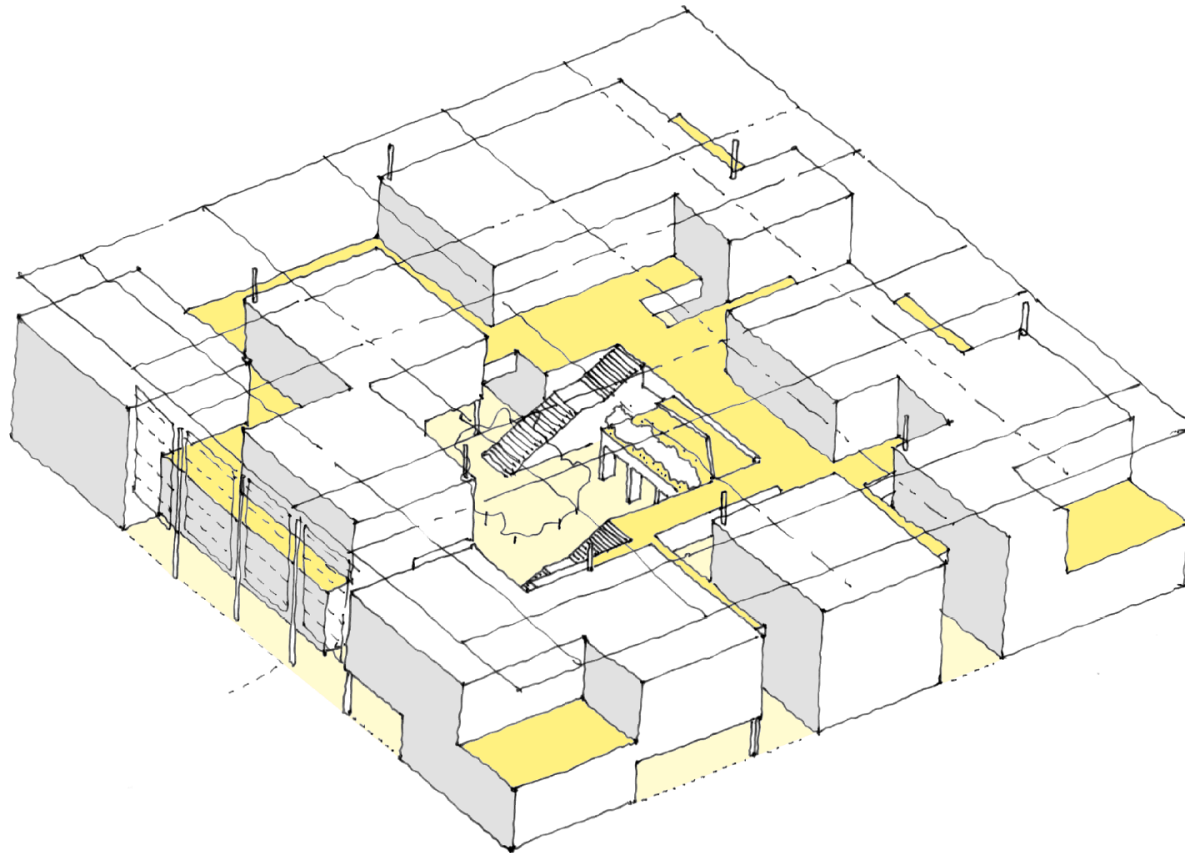
A story..a story..

An African king sends his son out to learn the rhythms of the jungle. On his first outing, against the din of buzzing insects and singing birds, the young prince can make out only the roar of the lions and the trumpet of the elephants. The boy returns again and again and begins to pick up less obvious sounds, until he can hear the rustle of a snake and the beat of a butterfly's wings. The king tells him to keep going back until he can sense the danger in the stillness and the hope in the sunrise. To be fit to rule, the prince must be able to hear that which does not make a sound.

(From the economist Ruchir Sharma – Rise & fall of nations)









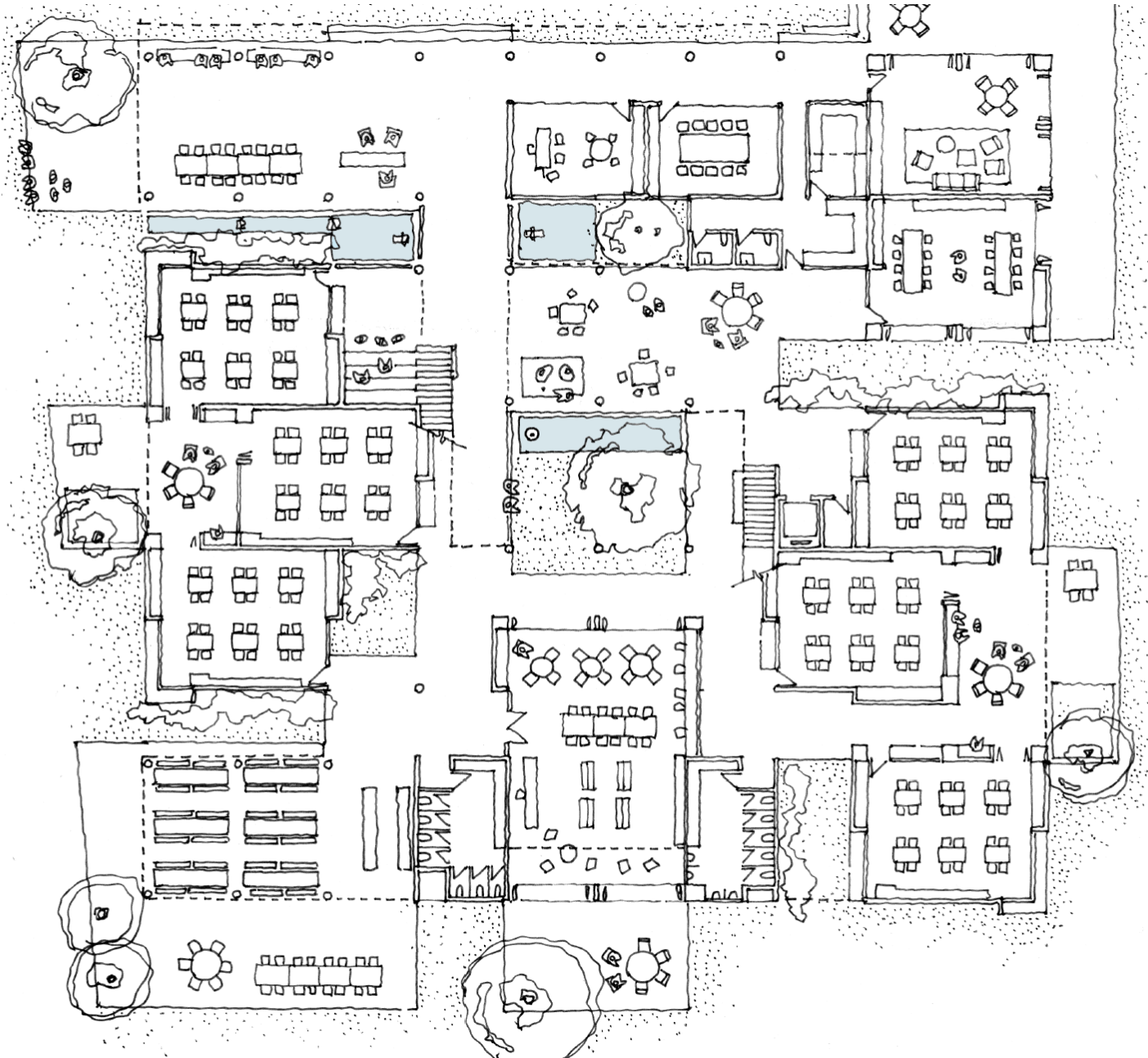










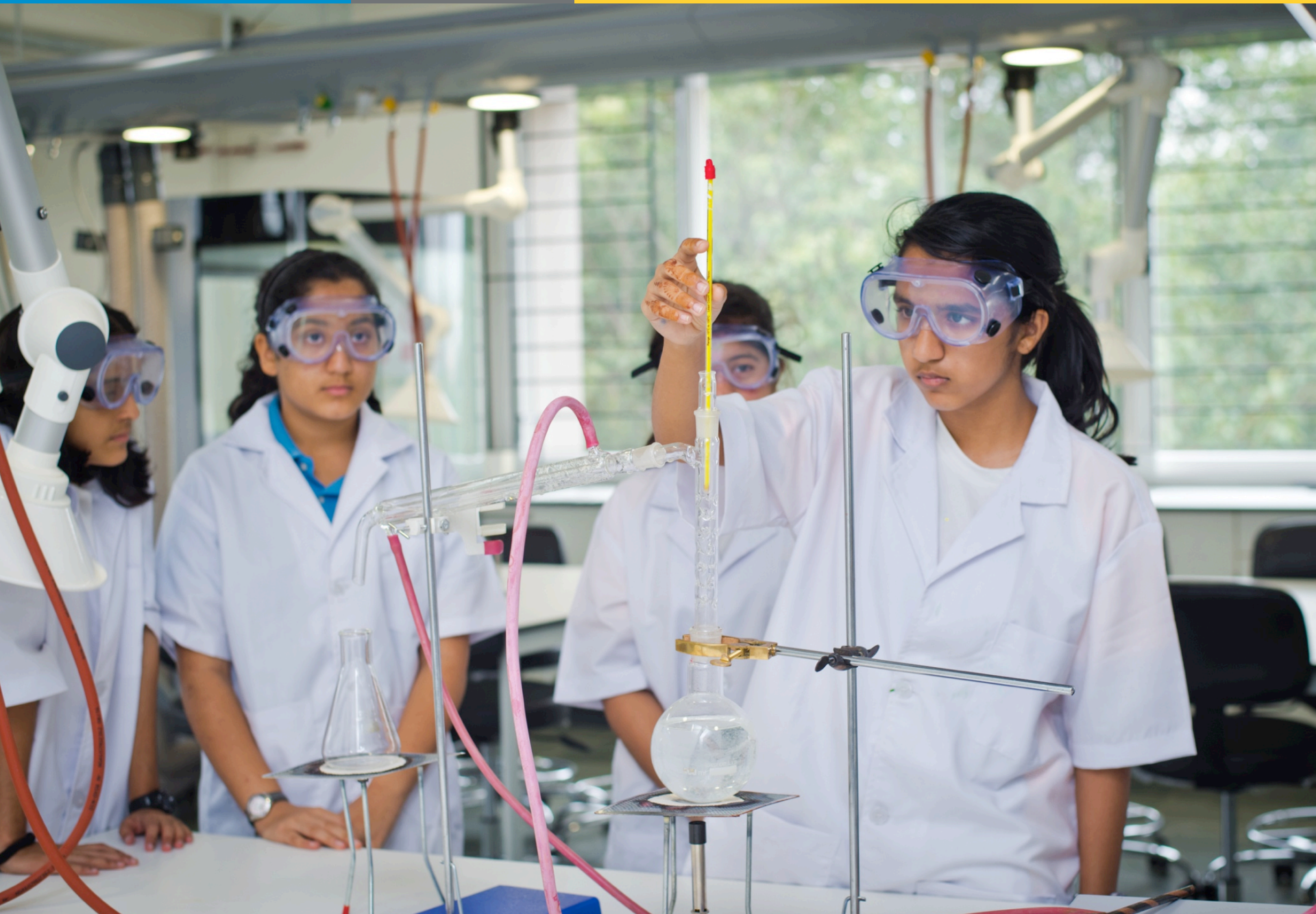








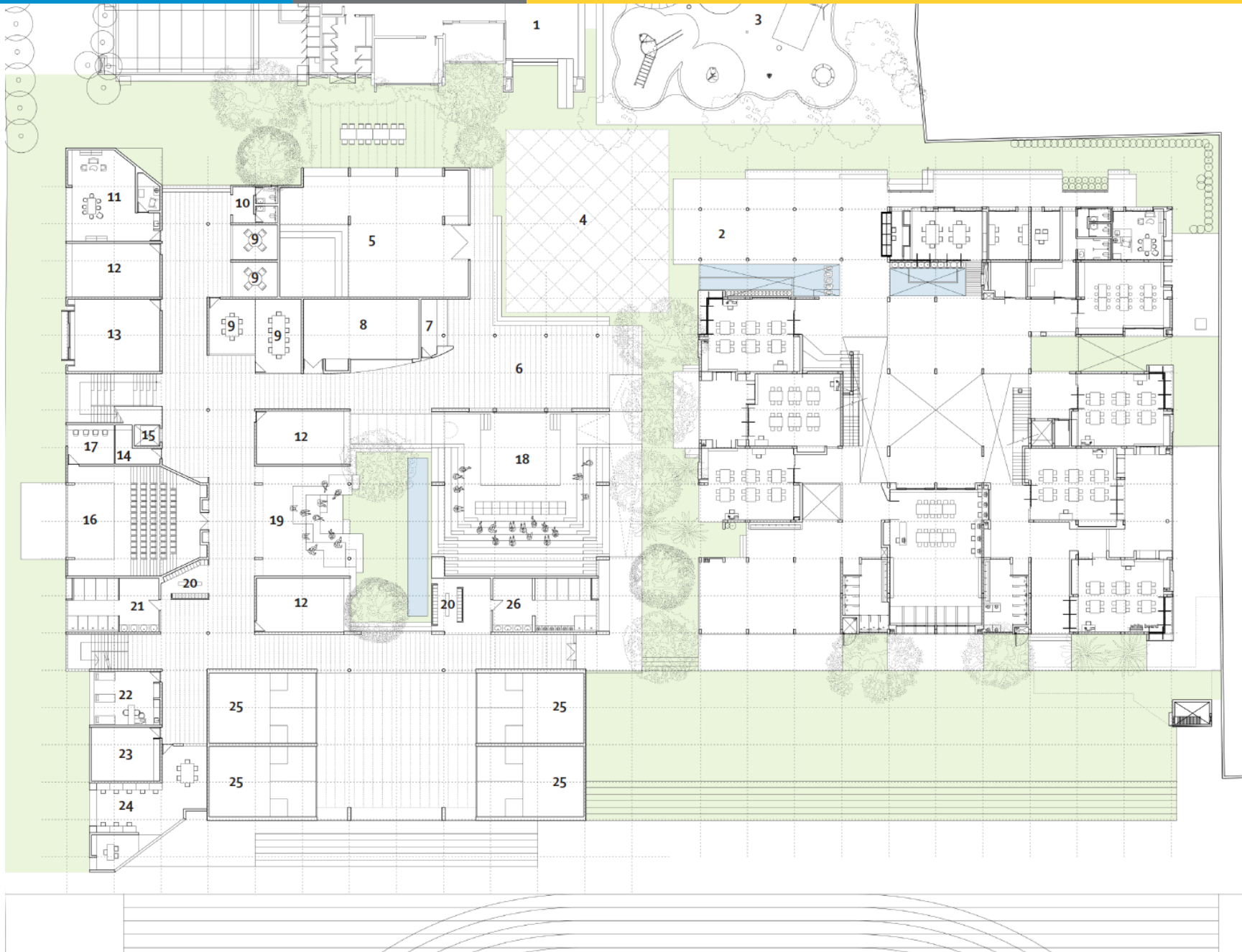


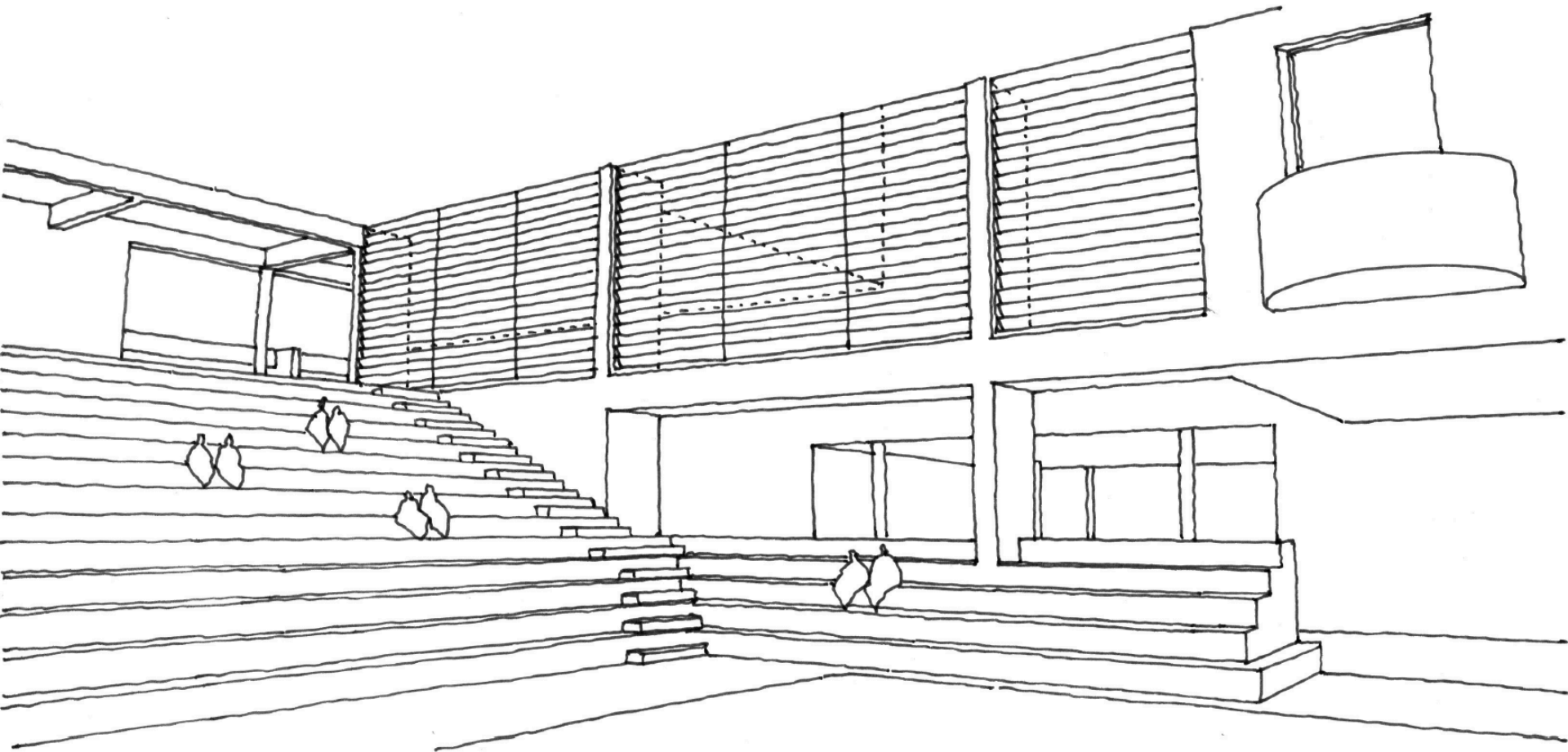












Factors to consider

Inward looking spaces with commons

Air circulation

North light vs East-west corridor

Strategic Windows – low and large

High ceilings

Less color

Area specific lighting

Natural materials - No synthetic ground cover

Insect safing vs insect proofing

Interaction with elements – air, water, earth, nature

Low step heights

Don't overbuild

Solar energy

As a school....Why Stress?

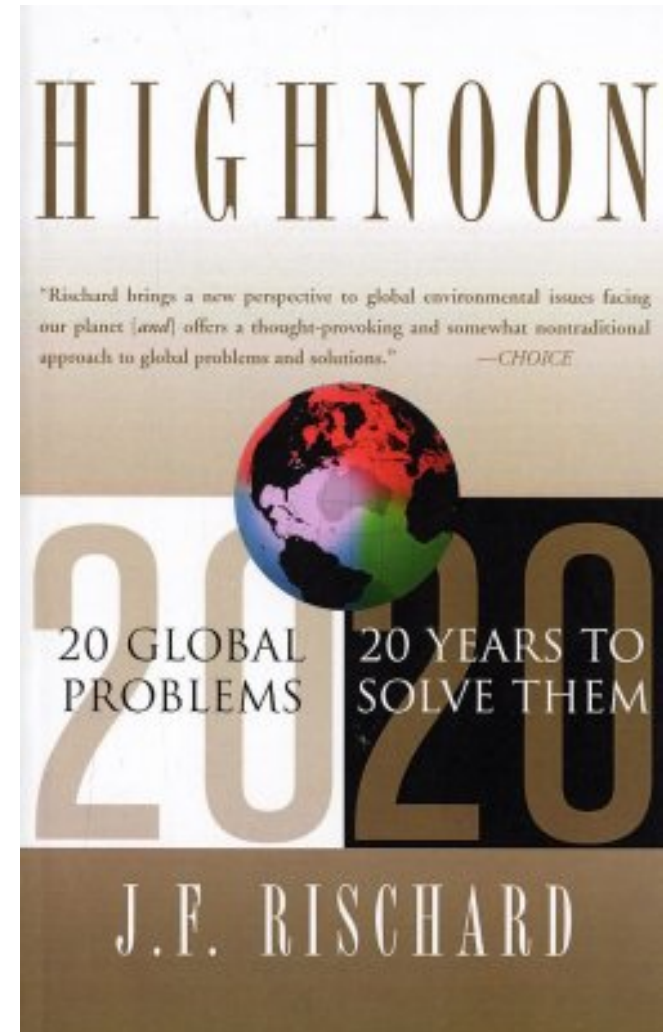
Today:

- Circadian Rhythms
- Increased productivity
- Reduced fatigue
- Alert minds
- Physically active kids
- Relaxed minds / Less stress
- Low respiratory disease
- Strong relationships
- Higher academic achievement

Tomorrow:

- Training the senses
- Creating impact
- Thoughtful choices
- Training the aesthetic
- Knowing rights / responsibilities
- Positive impact
- Green environments are possible
- Building foundations for life

High Noon – J.F.Rischar



Sharing our Planet (Global Commons)

Sharing our Humanity (Global Commitment)

Sharing our Rule Book (Global regulatory framework)

Building great learning environments while being kind to the planet and community

Natural ventilation ✓✓✓

Natural lighting ✓✓✓

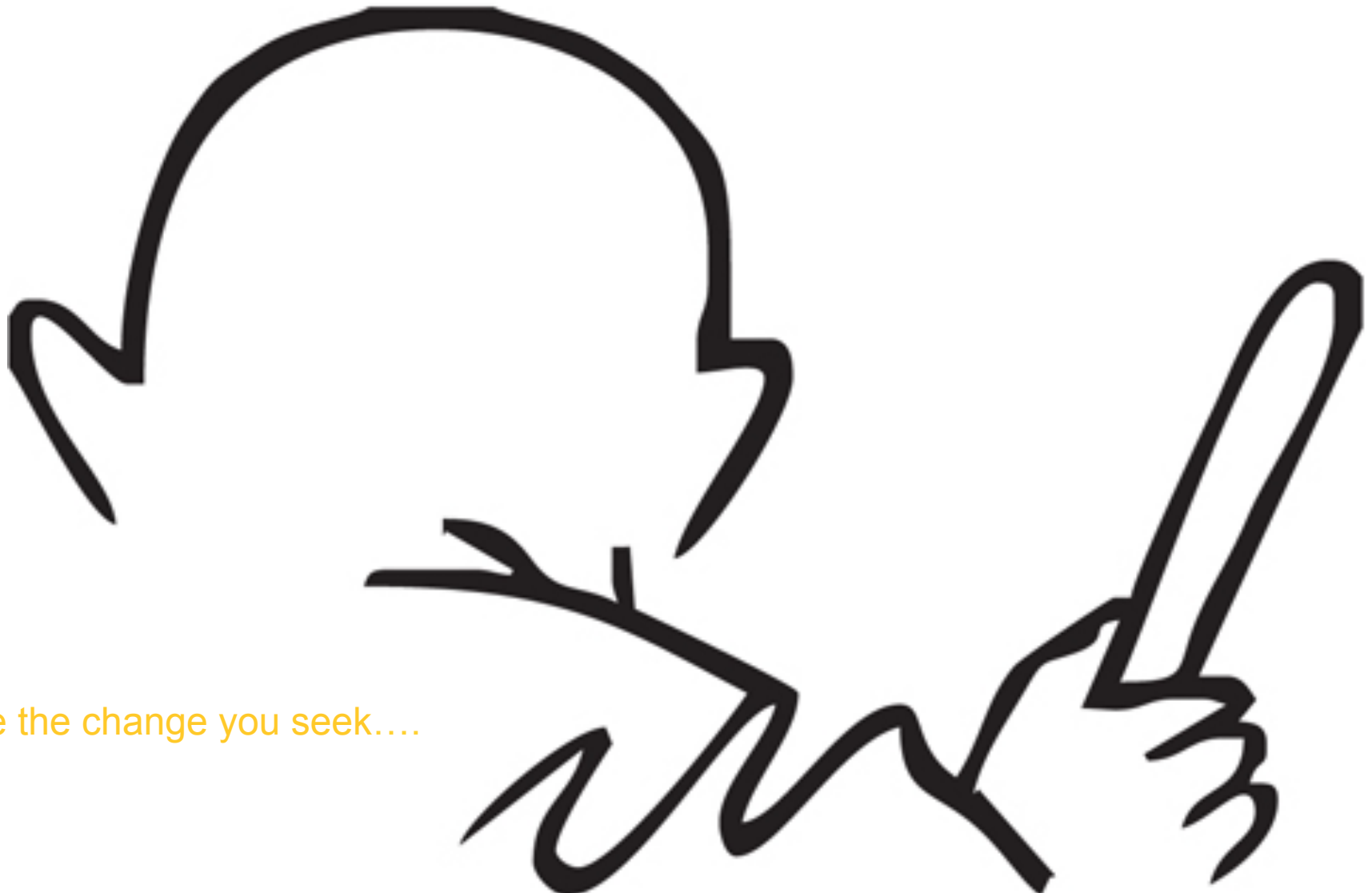
Water recycling ✓✓

Clean Air ✗

Noise ✗

Low / Zero Energy ✓

Building Knowledge, Selfawareness & Relationships with People & the Environment to lead Happy Healthy Impactful lives



Be the change you seek....